

Welcome to this workshop.
Read carefully these instructions before starting your work.

Your Device

Any desktop computer, laptop or good tablet can be used to connect and work in this workshop. The optimal resolution of the screen is 1920 x 1080 or higher. Also 1600 x 900 is acceptable. With less screen resolution the quality of the view is poor and probably not all the elements will be displayed.

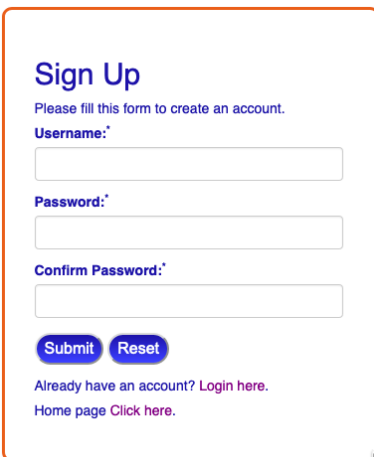
Your privacy

According to EU rules we do our best to protect your privacy. (See the Cookies and Privacy policies in the home page).

This site is SSL certified¹ and we do not ask you any personal detail to register. But to guarantee the best level of privacy we need your cooperation. Please do not use your true personal name to register yourself and do not write any information that can identify you or anybody else when you work in the Digital Pathology Workshop.

1. SSL (Secure Sockets Layer) is a standard cryptographic protocol and security technology used for securing communications on the Internet and support authenticating of the communicating parties.

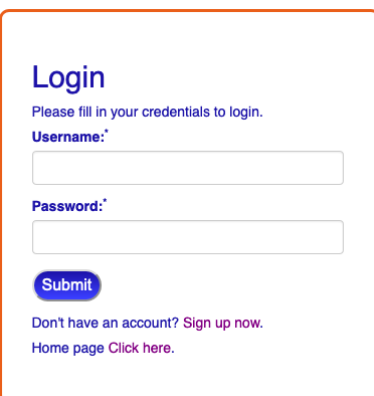
Registration & Login



The screenshot shows a 'Sign Up' form with the following elements: a title 'Sign Up', a sub-header 'Please fill this form to create an account.', three input fields labeled 'Username:', 'Password:', and 'Confirm Password:', two buttons labeled 'Submit' and 'Reset', and two links at the bottom: 'Already have an account? Login here.' and 'Home page Click here.'

This operation is quite simple. Choose a user name and a password and click “Submit”. Your password is immediately encrypted and we do not have the key to decrypt it. It means that **if you forget your password we cannot retrieve it**. If it happens the only possible solution is to register again with a different user name, but unfortunately all your previous work is irredeemably lost.

Please do not use your true personal name when you register. For example: “Alberto” or “George” or “Françoise” are not good user names. “User45” or “old-cyto” or “sunshine” are excellent usernames. After registration you can login with the chosen user name and password.



The screenshot shows a 'Login' form with the following elements: a title 'Login', a sub-header 'Please fill in your credentials to login.', two input fields labeled 'Username:' and 'Password:', one button labeled 'Submit', and two links at the bottom: 'Don't have an account? Sign up now.' and 'Home page Click here.'

Once you have registered yourself you can Login with your Username and password.

Select a case

Cases

Case-01

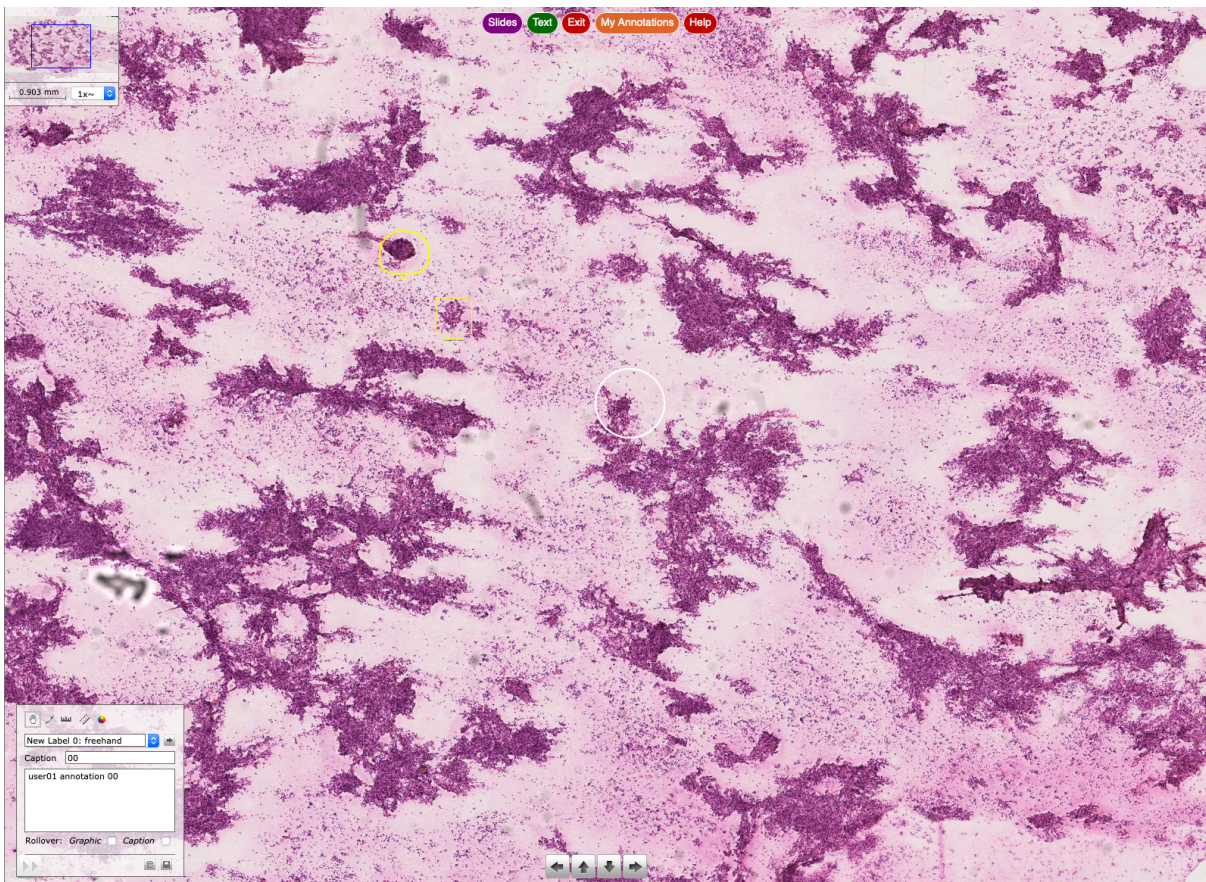
Case-02

Case-03

Case-04

After login a new page will display the list of available cases. Simply click a case to start your work.

The Viewer



Clicking a case name a page similar to this one will be displayed. It is the so-called Viewer.

Zoom-in or Zoom-out:

On a computer:

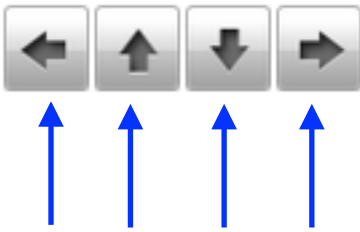
Use the **mouse wheel** or **Ctrl-a** (zoom-in) or **Ctrl-z** (zoom-out)

On a tablet:

Pinch 2 or more fingers together or apart to adjust zoom.

The viewer is made of the following different parts.

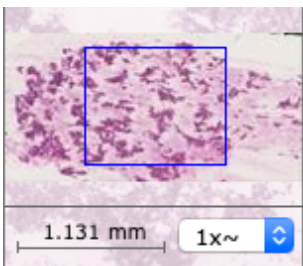
1. Navigation Buttons (bottom of the screen)



The arrows are not visible on some tablets.
On tablets drag 2 or more fingers to scroll and navigate.

Navigation Arrows

2. Navigation Map



At the top left of the Viewer you can find the *navigation map* of the image. It is a miniature of the whole image with a blue rectangle showing the area you are looking at. Changing magnification the blue rectangle becomes smaller or larger according to the chosen magnification.

3. Selection Buttons

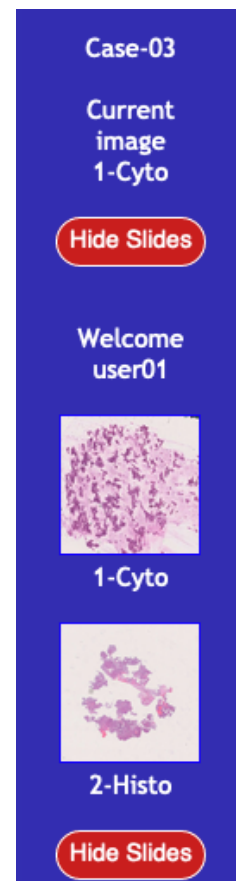


At the bottom of the Viewer there are five or six buttons. The explanations for each one follow.

3.1 Slides

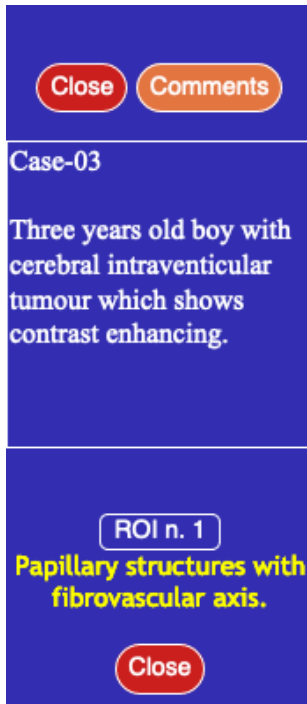
Clicking "*Slides*" a narrow column-like window appears at the right side of the image. It shows the name of the current displayed image, the name of the user and an icon for each image included in the case.

Click the corresponding icon to select and show an image. A click on "*Hide Slides*" will close the window.



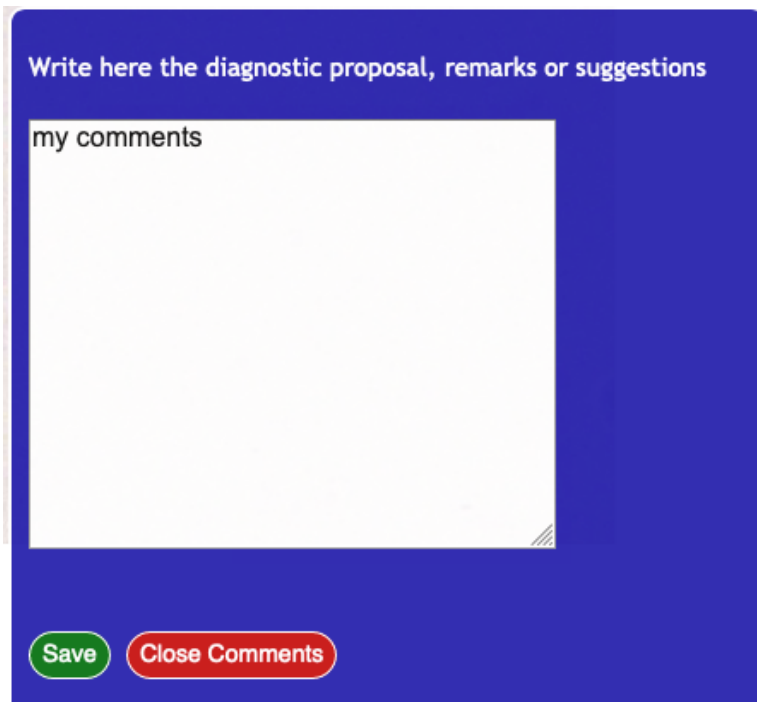
3.2 Text

In some slides, to facilitate the work of the users, one or more Region Of Interest (ROI) are identified. In every ROI there are some features helpful to understand the diagnostic problem. Clicking for the first time "Text" a window like the following one is open.



The windows shows the clinical news of the case and one or more buttons to select the existing ROI. The yellow text describes the ROI.

If no ROI is available is shown the text: "No ROI available for this slide"



Clicking "Comments" a text field is displayed. In this field you can write your comments and notes related to the case.

Don't forget to save your work when finished.

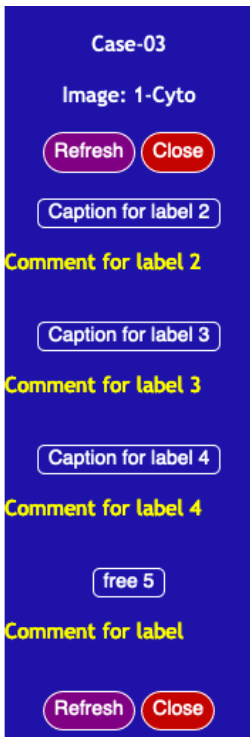
3.3 Exit

Clicking "Exit" the Viewer is closed and the "Cases" page is displayed.

3.4 "My Annotations" button.

My Annotations

If you have created any Annotation (see paragraph 4), you can display and access them clicking this button.



A window like this will appear on the right side of the viewer showing a button to select the annotations and the caption you have previously created (see paragraph 4) for that annotation.

3.5 "Presentation" button.

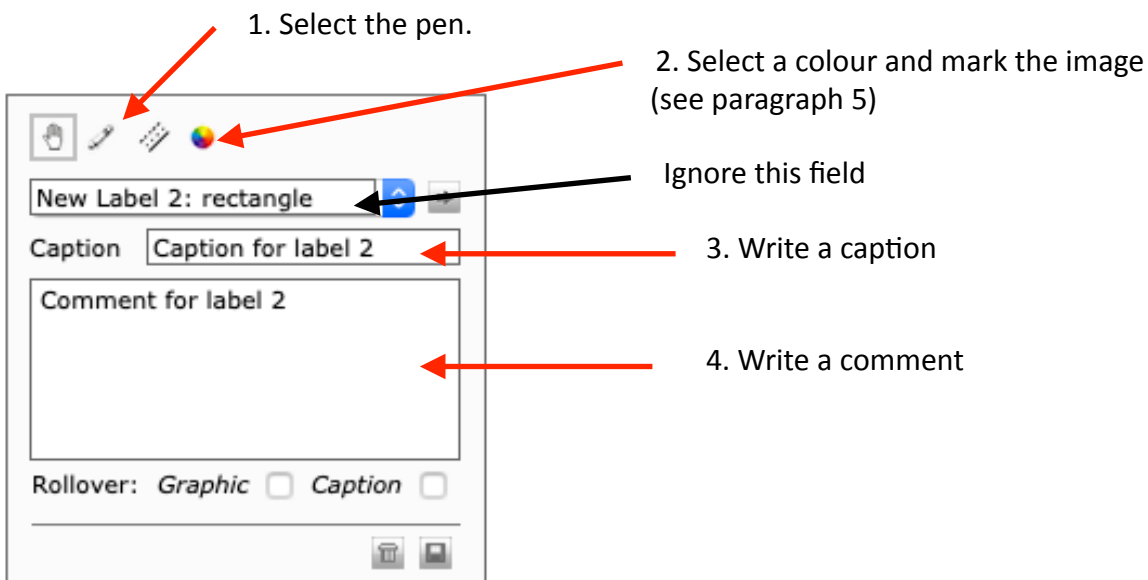
Clicking this button the presentation associated to this case (if available) is displayed.

3.6 "Help" button.

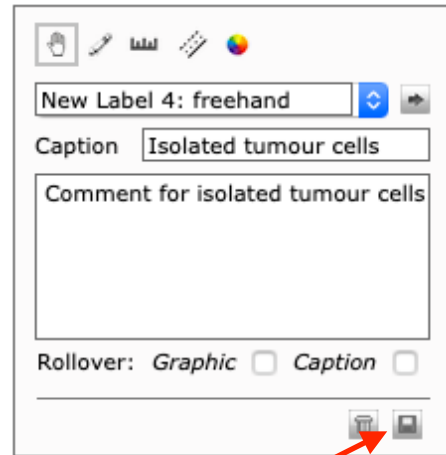
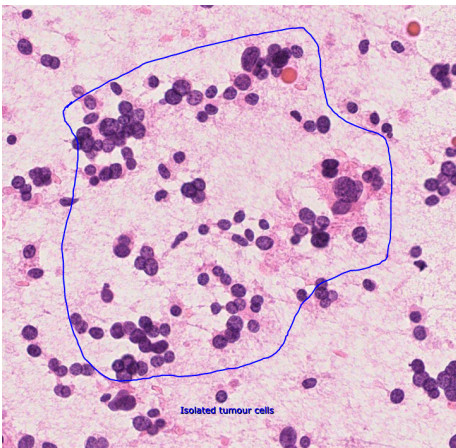
This help is displayed.

4. Annotation Box

This tool allows you to mark cells or other features in the digital image and write some related notes. To make a simple annotation follow the following steps.

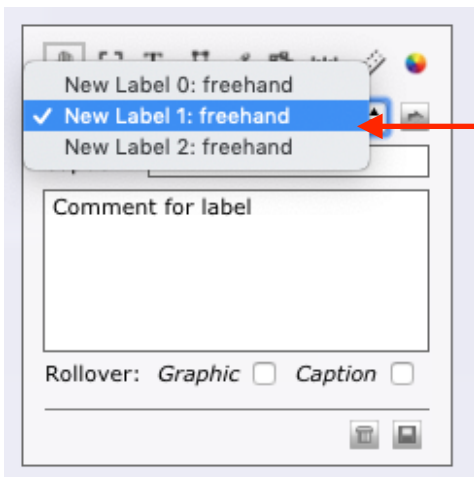


5. Mark the slide using the mouse

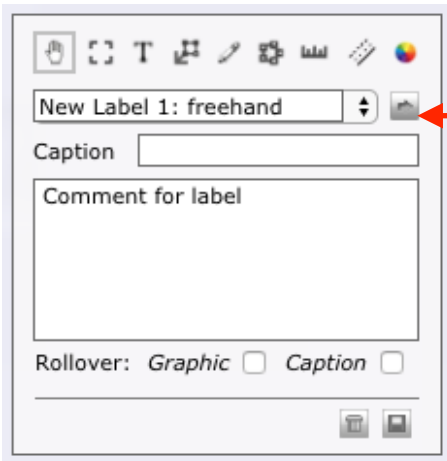


Remember to save your work

6. To go to a marked area:



Select the annotation



Click the arrow to go to the selected annotation

Or follow the instructions at paragraph 3.4